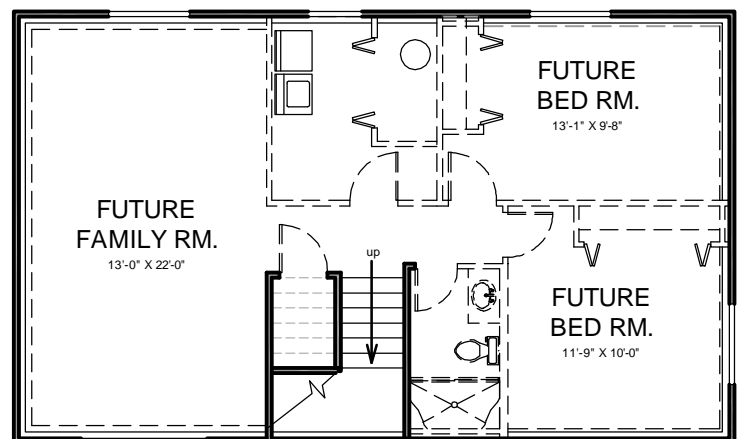


FIRST FLOOR LEVEL

This charming home has a modern floor plan with a front-entry garage that conserves space on a small lot. The kitchen provides plenty of workspace with an angled counter as well as a nearby dining area.

### Everest 960 Split Level Plan

|            |           |
|------------|-----------|
| Bedrooms   | 2         |
| Bath       | 1         |
| Width      | 40'-0"    |
| Depth      | 48'-0"    |
| 1st Floor  | 960 sq ft |
| Finished   | 960 sq ft |
| Unfinished | 960 sq ft |



BASEMENT LEVEL

